

# Motor Control Explosionproof Circuit Breakers - Disconnect Switches

8B-1

## EXPLOSIONPROOF AND DUST-IGNITIONPROOF CLASS I, GROUPS B, C & D; CLASS II, GROUPS E, F & G; NEMA 7 & 9



Optional XCBH 2-2 handle shown; standard handle is XBO.

**BREAKERS:** Circuit breakers are thermal magnetic type and are available in frame sizes ranging from 15 to 1200 amperes. Also available as non-automatic circuit interrupters, without automatic overload trip elements for load switching and isolation. In this application short circuit and overload protection must be provided by separate protection device. Breakers also available for magnetic trip only.

The units can be set up for GE, Cutler-Hammer (Westinghouse), Square-D and ITE (Siemens) brand circuit breakers. Consult factory for other brands. Holes for Cutler-Hammer circuit breakers are drilled directly into back wall.

**ENCLOSURES:** The housings are copper-free cast aluminum alloy. The enclosures are Adalet XCE series with precision ground cover and body joints.

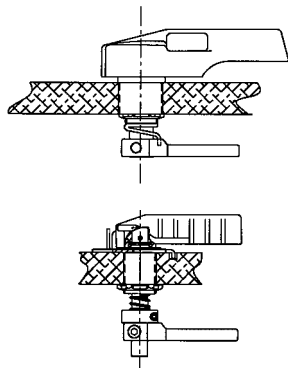
The enclosure design offers sufficient space for wire bending and ease of installation and maintenance. XCBC and larger units are furnished with hinges, and stainless steel cover bolts. The covers are removable for clear access to breakers. For XCBA and XCBB units, hinge and mounting pan are optional.

The front mounted circuit breaker handle is padlockable in either "on" or "off" position.

High interrupting capacity breakers are also available in comparable size.

**Approvals:**  
Enclosure Certifications

**Compliances:**  
Class I, Groups B, C, D  
Class II, Groups E, F, G  
NEMA 4, 7, 9  
UL Classified Enclosure



**Optional XCBH Style**  
"Classic", larger handle.  
Special 1" – 1 1/2" NPSM opening required for installation.

**Standard XBO Style**  
"New", spring loaded, compact adjustable design, ease of assembly and less expensive.  
Standard 3/4 – 14 NPSM opening required for installation.

Enclosure	UL Classified Enclosure Rating
XCBA, XCBB, XCBC, XCBD, XCBE, XCBF, XCBG	Class 1, Grps BCD
XCBA N4, XCBB N4, XCBC N4, XCBD N4, XCBE N4, XCBF N4, XCBGN4	Class 1, Grps CD

# Motor Control Explosionproof Circuit Breakers - Disconnect Switches

## Molded Case Circuit Breaker Enclosures (Breaker Included)

Breaker Frame Size	Breaker Interrupting Rating	Volts	Amp Rating	Catalog No.	
				2 Pole Non-Interchangeable	3 Pole Non-Interchangeable
100/150	14,000 Amperes Interrupting Capacity at 480 Volt AC	480 Volt AC	15	XCBA-N4-15E42*	XCBA-N4-15E43*
			20	XCBA-N4-20E42*	XCBA-N4-20E43*
			30	XCBA-N4-30E42*	XCBA-N4-30E43*
			40	XCBA-N4-40E42*	XCBA-N4-40E43*
			50	XCBA-N4-50E42*	XCBA-N4-50E43*
			60	XCBA-N4-60E42*	XCBA-N4-60E43*
			70	XCBA-N4-70E42*	XCBA-N4-70E43*
		250 Volt DC	80	XCBB-N4-80E42*	XCBB-N4-80E43*
			90	XCBB-N4-90E42*	XCBB-N4-90E43*
			100	XCBB-N4-100E42*	XCBB-N4-100E43*
			110	XCBB-N4-110E42*	XCBB-N4-110E43*
			125	XCBB-N4-125E42*	XCBB-N4-125E43*
			150	XCBB-N4-150E42*	XCBB-N4-150E43*
			100/150	14,000 Amperes Interrupting Capacity at 600 Volt AC	600 Volt AC
20	XCBA-N4-20E62*	XCBA-N4-20E63*			
30	XCBA-N4-30E62*	XCBA-N4-30E63*			
40	XCBA-N4-40E62*	XCBA-N4-40E63*			
50	XCBA-N4-50E62*	XCBA-N4-50E63*			
60	XCBA-N4-60E62*	XCBA-N4-60E63*			
70	XCBA-N4-70E62*	XCBA-N4-70E63*			
250 Volt DC	80	XCBB-N4-80E62*			XCBB-N4-80E63*
	90	XCBB-N4-90E62*			XCBB-N4-90E63*
	100	XCBB-N4-100E62*			XCBB-N4-100E63*
	110	XCBB-N4-110E62*			XCBB-N4-110E63*
	125	XCBB-N4-125E62*			XCBB-N4-125E63*
	150	XCBB-N4-150E62*			XCBB-N4-150E63*
	225/250	18,000 Amperes Interrupting Capacity at 600 Volt AC			600 Volt AC
90			XCBC-N4-90JN2*	XCBC-N4-90JN3*	
100			XCBC-N4-100JN2*	XCBC-N4-100JN3*	
125			XCBC-N4-125JN2*	XCBC-N4-125JN3*	
150			XCBC-N4-150JN2*	XCBC-N4-150JN3*	
175			XCBC-N4-175JN2*	XCBC-N4-175JN3*	
200			XCBC-N4-200JN2*	XCBC-N4-200JN3*	
225			XCBC-N4-225JN2*	XCBC-N4-225JN3*	
250			XCBC-N4-250JN2*	XCBC-N4-250JN3*	

\* Circuit breaker brand suffix:

**W**-Cutler-Hammer (Westinghouse)

**G**-General Electric

**S**-Square-D

**T**-I.T.E. (Siemens)

8B-2

# Motor Control Explosionproof Circuit Breakers - Disconnect Switches

8B-3

## Molded Case Circuit Breaker Enclosures (Breaker Included)

Breaker Frame Size	Breaker Interrupting Rating	Volts	Amp Rating	Catalog No.	
				2 Pole Non-Interchangeable	3 Pole Non-Interchangeable
400	22,000 Amperes Interrupting Capacity at 600 Volt AC	600 Volt AC	100	XCBD-N4-100KN2*	XCBD-N4-100KN3*
			125	XCBD-N4-125KN2*	XCBD-N4-125KN3*
			150	XCBD-N4-150KN2*	XCBD-N4-150KN3*
		250 Volt DC	175	XCBD-N4-175KN2*	XCBD-N4-175KN3*
			200	XCBD-N4-200KN2*	XCBD-N4-200KN3*
			225	XCBD-N4-225KN2*	XCBD-N4-225KN3*
			250	XCBE-N4-250KN2*	XCBE-N4-250KN3*
			300	XCBE-N4-300KN2*	XCBE-N4-300KN3*
			350	XCBE-N4-350KN2*	XCBE-N4-350KN3*
400	XCBE-N4-400KN2*	XCBE-N4-400KN3*			
600	22,000 Amperes Interrupting Capacity at 600 Volt AC	600 Volt AC	250	XCBE-N4-250LI2*	XCBE-N4-250LI3*
			300	XCBE-N4-300LI2*	XCBE-N4-300LI3*
			350	XCBE-N4-350LI2*	XCBE-N4-350LI3*
		250 Volt DC	400	XCBE-N4-400LI2*	XCBE-N4-400LI3*
			500	XCBF-N4-500LI2*	XCBF-N4-500LI3*
			600	XCBF-N4-600LI2*	XCBF-N4-600LI3*
800	22,000 Amperes Interrupting Capacity at 600 Volt AC	600 Volt AC	400	XCBF-N4-400MI2*	XCBF-N4-400MI3*
			500	XCBF-N4-500MI2*	XCBF-N4-500MI3*
		250 Volt AC	600	XCBF-N4-600MI2*	XCBF-N4-600MI3*
			700	XCBF-N4-700MI2*	XCBF-N4-700MI3*
			800	XCBF-N4-800MI2*	XCBF-N4-800MI3*

**Note:** For Interchangeable Trip substitute an "I" for "N" in the Catalog Number.  
 (Example: XCBC-N4-70JI2)

## Fusible Disconnect Switches

Horsepower Rating at 480 Volts	Horsepower Rating at 600 Volts	Amp Rating	Catalog No. 3 Pole
20	20	30	XCBA-N4-30DF3*
40	50	60	XCBA-N4-60DF3*
75	75	100	XCBB-N4-100DF3*
125	150	200	XCBC-N4-200DF3*

**Note:** (3) Class "J" fuses are optional in the above catalog numbers.

\* Circuit breaker brand suffix:

**W**-Cutler-Hammer (Westinghouse)

**G**-General Electric

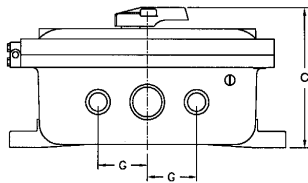
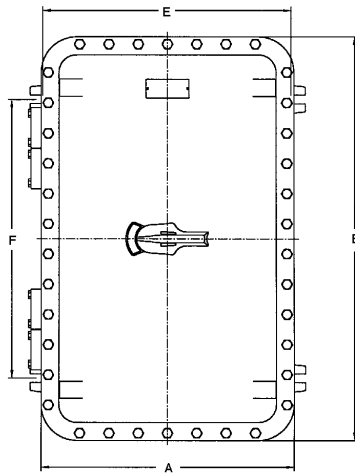
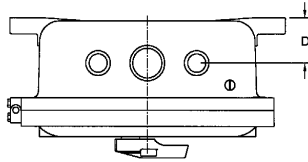
**S**-Square-D

**T**-I.T.E. (Siemens)

# Motor Control Explosionproof Circuit Breakers - Disconnect Switches

## Non-Fused Disconnect Switches

Horsepower Rating at 480 Volts	Horsepower Rating at 600 Volts	Amp Rating	Catalog No. 3 Pole
20	25	30	XCBA-N4-30DN3
40	60	60	XCBA-N4-60DN3
75	75	100	XCBB-N4-100DN3
125	150	200	XCBC-N4-200DN3



## Circuit Breaker Enclosure Only

Breaker Frame Size	Trip Range	Catalog Number
100	15-70	XCBA-N4
100/150	80-150	XCBB-N4
225/250	70-250	XCBC-N4
400	100-225	XCBD-N4
400/600	250-400	XCBE-N4
600/800	400-800	XCBF-N4
1200	800-1200	XCBG-N4

## CIRCUIT BREAKERS and DISCONNECT OPTIONS

Description	Suffix	Available On		Universal Enclosure Only
		Circuit Breaker	Disconnect Switch	
Auxiliary Switch 1A and 1B Contacts	AS1	•	•	
Auxiliary Switch 2A and 2B Contacts	AS2	•	•	
Bell Alarm (Specify No. of Contacts)	BA	•		
Breather/Drain - installed in bottom	E	•	•	•
Breather and Drain installed	EE	•	•	•
High Interrupting Capacity Breaker	HI	•		
Epoxy Coating (External), (Specify Color)	LI	•	•	•
Epoxy Coating (Internal and External), (Specify Color)	L2	•	•	•
Substitute MCP for Breaker	M	•		
Phenolic Nameplate (Specify Legend)	NP	•	•	•
Shunt Trip (Specify Voltage Rating)	ST	•		
Undervoltage Release (Specify Voltage Rating)	UV	•		
Other / Special	Z	•	•	

## Data Dimensions

Enclosure	Nominal Inside Dimensions			Overall Dimensions			Mounting CL to CL		Mounting Bolt Size	Conduit Dimension		Conduit # of Holes		Shipping Weight
	Width	Length	Depth	A	B	C	E	F		D	G	Size	Top/Bottom	Pounds
XCBA-N4	6	11	5	9 1/4	14 1/4	9	9 1/8	7 1/2	7/16	2 1/2	—	1 1/4	1	28
XCBB-N4	6	13	5	9 1/4	16 1/4	9	9 1/8	9 1/2	3/8	2 1/2	—	2	1	31
XCBC-N4	7	18	5	10 3/8	21 5/8	9	9 3/4	14 1/2	3/8	2 3/4	—	2 1/2	1	47
XCBD-N4	12	20	5	16 1/4	24 1/4	10	15 3/4	14 3/8	1/2	3 1/4	—	2 1/2	1	108
XCBE-N4	12	24	6	16 1/4	28 1/4	11	15 3/4	18 3/8	1/2	3 5/8	2 7/8	3	2	131
XCBF-N4	12	36	8	16 1/4	40 1/4	13 1/2	15 3/4	29	5/8	4 1/2	3 3/8	4	2	237
XCBG-N4	12	46	8	16 1/4	50 1/4	13 3/8	15 3/4	39	5/8	4 1/2	3 3/8	4	2	286

All enclosures have 1/2" NPT top and bottom for breather drain.

8B-4