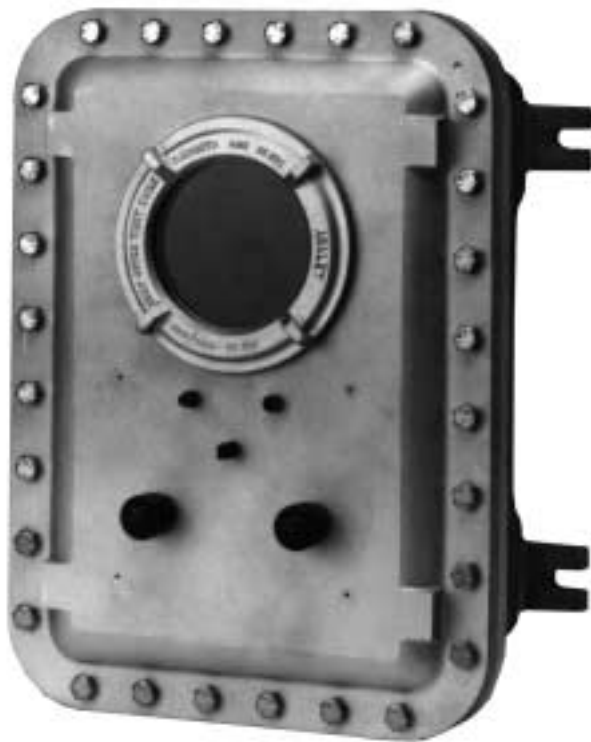


## XCE & XJF Explosionproof Enclosures

### XCE EXPLOSIONPROOF CONTROL ENCLOSURES XJF EXPLOSIONPROOF JUNCTION BOXES FLANGED



#### Applications:

Adalet XCE series and XJF enclosures are used in the installation of electrical/electronic components for control, measurement or monitoring applications in hazardous environments. XCE control enclosures can be modified for installation of a variety of explosionproof operator devices, viewing windows and accessories permitting the development of customized enclosure systems.

#### Features


- Copper-free aluminum, lightweight and corrosion resistant.
- Integral, cast-on mounting lugs, slotted for ease of field installation.
- Uniform wall thickness for ease of installation of control devices, windows and conduit openings.
- External flange provides maximum accessibility of components mounted inside.
- Tumblast finish for quality appearance.
- Premium high strength steel cover bolts, plated and coated for maximum corrosion resistance (stainless steel optional).
- Enclosures certified drillable for conduit entrances in the factory or the field.
- Internal grounding screw standard.
- Covers exceeding approximately 75 lbs. are provided with two removable eye bolts for ease of handling.
- XCE/XCEQ/XCEX certified drillable for operators at the factory or in the field.
- IP40 standard on XCEX without gasket.

#### Design Options

- CENELEC flameproof optional – designate XCEX when ordering. Includes external earthing assembly.
- Quad-lead bolt (quick thread bolt) option - designate XCEQ when ordering. Not available with XCEX.
- NEMA 4 (WATERTIGHT)/IP66:  
Features a nitrile O-Ring retained in the cover flange in a machined groove. When ordering, add N4 to the catalog number. \*This option may affect certifications - consult factory.
- NEMA 6 (SUBMERSIBLE):  
Consult factory.
- Cast-on mounting buttons, bosses and pads:  
Per customer specifications.
- Captive cover bolts:  
Consult factory.
- Hinges:  
May be installed for removable or non-removable cover. Left side standard, other locations optional.
- Windows:  
Circular window sizes ranging from 1" to 8" diameter viewing area. Rectangular window sizes ranging from 3" x 3" to 13" x 13" viewing area.
- Stainless steel cover bolts. Consult factory for NEMA 4X rating.
- Mounting Pans:  
Available in galvanized steel, aluminum or phenolic.
- Sidewall auxiliary device installation or machining available on XCE/XCEQ/XCEX series enclosures – Consult Factory.
- Factory machined metric sidewall threads approved on XCE and XCEX series for Groups C & D only.
- The Adalet engineering department is available to assist in the selection of custom explosionproof enclosures for your products.



#### Certifications

##### XCE Series Control Enclosures

 UL STANDARD 1203  
CSA STANDARD C22.2 No. 30  
EN 50 018 (XCEX)

Class I, Groups B,C,D  
Class II, Groups E,F,G  
Class III  
CENELEC: EExd IIB, (Specify XCEX)  
ATEX Certifications available – Consult Factory.  
NEMA 4, 7B\*CD, 9EFG

##### XJF Junction Boxes

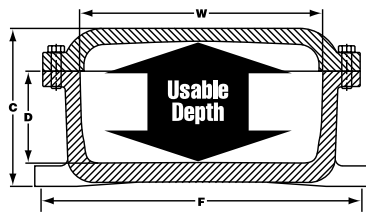
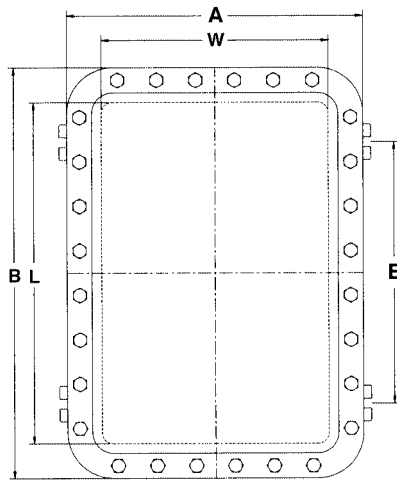
 CSA STANDARD C22.2 No. 30  
 UL STANDARD 886

Some sizes and option combinations may not be certified.

**Consult Factory for specific certifications and file numbers.**

5A-1

# XCE & XJF Explosionproof Enclosures



- To indicate Quad-Lead bolt option, add suffix "Q" after XCE. (Not available on XCEX models.)
- Operators, windows and hinges are ordered separately.
- To indicate EEx d approval specify XCEX.
- To indicate NEMA 4/IP66 option, add suffix "N4" after size (catalog number).

**Note:** All dimensions are in inches and are nominal enclosure size only. Inside nominal dimensions are at flange. Consult factory for exact dimensions.

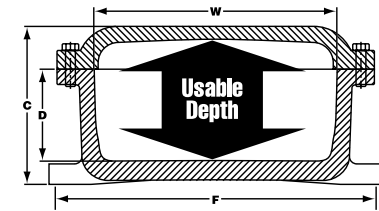
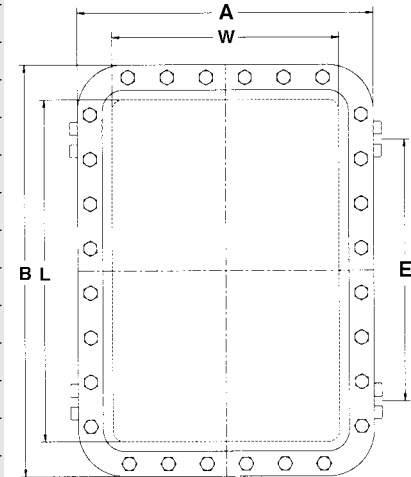
\*Approval Pending – Consult Factory.

XCE/XJF Catalog Number	Inside Nominal Dimensions			Usable Inside Depth	Overall Dimension			Mounting Lug CL to CL		Mtg. Bolt Size	Apprx. Shipping Weight, lbs.
	W	L	D		A	B	C	E	F		
041604	4	16	4	4 3/4	7 1/4	19 1/4	6	12 1/8	6 3/4	3/8	25
060804	6	8	4	4 5/8	9 1/4	11 1/4	5 15/16	4 1/2	9 1/8	3/8	21
060805	6	8	5	5 5/8	9 1/4	11 1/4	6 15/16	4 1/2	9 1/8	3/8	23
060806	6	8	6	6 5/8	9 1/4	11 1/4	7 15/16	4 1/2	9 1/8	3/8	25
061105	6	11	5	5 7/8	9 1/4	14 1/4	7 3/16	7 1/2	9 1/8	3/8	24
061204	6	12	4	4 3/4	9 1/4	15 1/4	6 1/16	8 1/2	9 1/8	3/8	24
061206	6	12	6	6 3/4	9 1/4	15 1/4	8 1/16	8 1/2	9 1/8	3/8	29
061305	6	13	5	5 7/8	9 1/4	16 1/4	7 3/16	9 1/2	9 1/8	3/8	26
071004	7	10	4	4 3/4	10 3/8	13 3/8	6 3/16	6 1/2	9 3/4	3/8	27
071006	7	10	6 1/8	6 3/4	10 3/8	13 3/8	8 3/16	6 1/2	9 3/4	3/8	31
071805	7	18 1/4	5	5 3/4	10 3/8	21 5/8	7 3/16	14 1/2	9 3/4	3/8	55
080804	8	8	4	4 13/16	11 3/8	11 3/8	6 3/8	4 1/4	11	3/8	24
080806	8	8	6	6 13/16	11 3/8	11 3/8	8 3/8	4 1/4	11	3/8	28
080808	8	8	8	8 13/16	11 3/8	11 3/8	10 3/8	4 1/4	11	3/8	35
081004	8	10	4	4 3/4	11 3/8	13 3/8	6 1/4	6 1/2	10 3/4	3/8	30
081006	8	10	6	6 3/4	11 3/8	13 3/8	8 1/4	6 1/2	10 3/4	3/8	34
081008	8	10	8	8 3/4	11 3/8	13 3/8	10 1/4	6 1/2	10 3/4	3/8	39
081204	8	12	4	4 3/4	11 3/8	15 3/8	6 1/4	8 1/2	10 3/4	3/8	34
081206	8	12	6	6 3/4	11 3/8	15 3/8	8 1/4	8 1/2	10 3/4	3/8	42
081208	8	12	8	8 3/4	11 3/8	15 3/8	10 1/4	8 1/2	10 3/4	3/8	48
091105	9	11	5	5 3/4	12 3/8	14 3/8	7 5/16	7 1/2	12	3/8	41
101004	10	10	4	4 3/4	13 3/8	13 3/8	6 5/16	6 1/2	13	3/8	34
101006	10	10	6	6 3/4	13 3/8	13 3/8	8 5/16	6 1/2	13	3/8	44
101008	10	10	8	8 3/4	13 3/8	13 3/8	10 5/16	6 1/2	13	3/8	50
101206	10	12	6 1/4	7 1/4	13 3/8	15 3/8	8 7/8	8 1/2	13 1/4	3/8	46
101404	10	14	4	4 3/4	13 3/8	17 3/8	6 7/16	10 5/8	13 1/4	3/8	42
101406	10	14	6	6 3/4	13 3/8	17 3/8	8 7/16	10 5/8	13	3/8	49
101408	10	14	8	8 3/4	13 3/8	17 3/8	10 1/2	10 5/8	13	3/8	57
101410	10	14	8	10 13/16	13 3/8	17 3/8	12 7/16	10 5/8	13	3/8	70
121204	12	12	4	5	16 1/4	16 1/4	6 15/16	8 5/8	15 3/4	1/2	60
121206	12	12	6	7	16 1/4	16 1/4	8 15/16	8 5/8	15 3/4	1/2	68
121208	12	12	8	9	16 1/4	16 1/4	10 15/16	8 5/8	15 3/4	1/2	80
121804	12	18	4	4 3/4	16 1/4	22 1/4	6 3/4	14 1/8	15 3/4	1/2	85
121806	12	18	6	6 3/4	16 1/4	22 1/4	8 3/4	14 1/8	15 3/4	1/2	93
121808	12	18	8	8 3/4	16 1/4	22 1/4	10 3/4	14 1/8	15 3/4	1/2	101
122005	12	20	5	5 3/4	16 1/4	24 1/4	8 1/8	14 3/8	15 3/4	1/2	104
122404	12	24	4	4 15/16	16 1/4	28 1/4	7 1/4	18 3/8	15 3/4	1/2	116
122406	12	24	6	6 15/16	16 1/4	28 1/4	9 1/4	18 3/8	15 3/4	1/2	127

5A-2

# XCE & XJF Explosionproof Enclosures

XCE/XJF Catalog Number	Inside Nominal Dimensions			Usable Inside Depth	Overall Dimension			Mounting Lug CL to CL		Mtg. Bolt Size	Apprx. Shipping Weight, lbs.
	W	L	D		A	B	C	E	F		
122408	12	24	8	8 15/16	16 1/4	28 1/4	11 1/4	18 3/8	15 3/4	1/2	140
122410	12	24	10	10 15/16	16 1/4	28 1/4	13 1/4	18 3/8	15 3/4	1/2	154
123006	12	30	6	6 11/16	16 3/4	34 1/4	9 5/8	23	15 3/4	1/2	180
123604	12	36	4	4 15/16	16 1/4	40 1/4	7 11/16	29	15 3/4	1/2	192
123606	12	36	6	6 15/16	16 1/4	40 1/4	9 11/16	29	15 3/4	1/2	212
123608	12	36	8	8 15/16	16 1/4	40 1/4	11 11/16	29	15 3/4	1/2	232
124608	12	46	8	8 15/16	16 1/4	50 1/4	11 11/16	39	15 3/4	5/8	280
141404	14	14	4	5	18 1/4	18 1/4	7 1/8	9 3/4	17 3/4	1/2	91
141406	14	14	6	7	18 1/4	18 1/4	9 1/4	9 3/4	17 3/4	1/2	97
141408	14	14	8	9	18 1/4	18 1/4	11 1/8	9 3/4	17 3/4	1/2	103
* 142210	14	22	10	11 1/4	18 1/4	26 1/4	13 5/8	16 1/2	17 3/4	1/2	181
* 142213	14	22	10	13	18 1/4	26 1/4	15 1/8	16 1/2	17 3/4	1/2	235
142806	14	28	6	7 13/16	18 1/4	32 1/4	9 9/16	22 1/2	17 3/4	1/2	120
161604	16	16	4	6 5/8	20 7/8	20 7/8	7 15/16	11	19 3/4	5/8	114
161606	16	16	6	7 5/8	20 7/8	20 7/8	9 15/16	11	19 3/4	5/8	135
161608	16	16	8	9 5/8	20 7/8	20 7/8	11 15/16	11	19 3/4	5/8	156
162406	16	24	6	7 13/16	20 7/8	28 7/8	10 3/8	18 3/8	19 3/4	5/8	190
162408	16	24	8	9 13/16	20 7/8	28 7/8	12 3/8	18 5/8	19 3/4	5/8	209
162410	16	24	10	11 13/16	20 7/8	28 7/8	14 3/8	18 3/8	19 3/4	5/8	225
162806	16	28	6	6 13/16	20 1/2	32 11/16	9 1/2	22 1/2	19 3/4	5/8	200
163406	16	34	6	6 15/16	20 1/2	38 1/2	9 1/2	27	19 3/4	5/8	260
163010	16	30	10	11 1/8	20 1/2	34 1/2	13 7/8	27	19 3/4	5/8	320
164610	16	46	10	11 13/16	20 7/8	50 7/8	14 9/16	39	19 3/4	5/8	390
181804	18	18	4	5 13/16	22 7/8	22 7/8	8 1/2	13	21 3/4	5/8	154
181806	18	18	6	7 13/16	22 7/8	22 7/8	10 1/2	13	21 3/4	5/8	177
181808	18	18	8	9 13/16	22 7/8	22 7/8	12 1/2	13	21 3/4	5/8	200
182406	18	24	6	7 7/16	22 7/8	28 7/8	10 13/16	18 3/8	21 3/4	5/8	226
182408	18	24	8	9 7/16	22 7/8	28 7/8	12 13/16	18 3/8	21 3/4	5/8	239
182410	18	24	10	11 7/16	22 7/8	28 7/8	14 13/16	18 3/8	21 3/4	5/8	260
183008	18	30	8	9 3/8	22 7/8	34 7/8	12 13/16	23	21 3/4	5/8	293
183608	18	36	8	9 3/8	22 7/8	40 7/8	12 7/8	29	21 3/4	5/8	318
183610	18	36	10	11 3/8	22 7/8	40 7/8	14 7/8	29	21 3/4	5/8	340
* 203606	20	36	6	7 1/8	24 7/8	40 7/8	10 7/8	29	24	5/8	340
* 203612	20	36	6	12	25 5/8	41 5/8	15	29	24	5/8	415
* 204806	20	48	6	7 1/8	24 7/8	52 7/8	10 7/8	41	24	5/8	430
* 204812	20	48	6	12	25 5/8	53 5/8	15	41	24	5/8	515
242408	24	24	8	9 7/16	28 7/8	28 7/8	12 7/16	18 3/8	28	5/8	302
242410	24	24	10	11 7/16	28 7/8	28 7/8	14 7/16	18 3/8	28	5/8	330
243008	24	30	8	9 1/4	28 7/8	34 7/8	12 15/16	23	28	5/8	356
243608	24	36	8	9 1/4	28 7/8	40 7/8	12 7/16	29	28	5/8	408
243610	24	36	10	11 1/4	28 7/8	40 7/8	14 7/8	29	28	5/8	433
* 243612	24	36	10	12	28 7/8	40 7/8	16 1/2	29	28	5/8	545
* 323612	32	36	6	12	37 3/4	41 3/4	15 1/2	29	36 1/8	5/8	691



- To indicate Quad-Lead bolt option, add suffix "Q" after XCE. (Not available on XCEX models.)
- Operators, windows and hinges are ordered separately.
- To indicate EEx d approval specify XCEX.
- To indicate NEMA 4/IP66 option, add suffix "N4" after size (catalog number).

**Note:** All dimensions are in inches and are nominal enclosure size only. Inside nominal dimensions are at flange. Consult factory for exact dimensions.

\*Approval Pending – Consult Factory.

5A-3

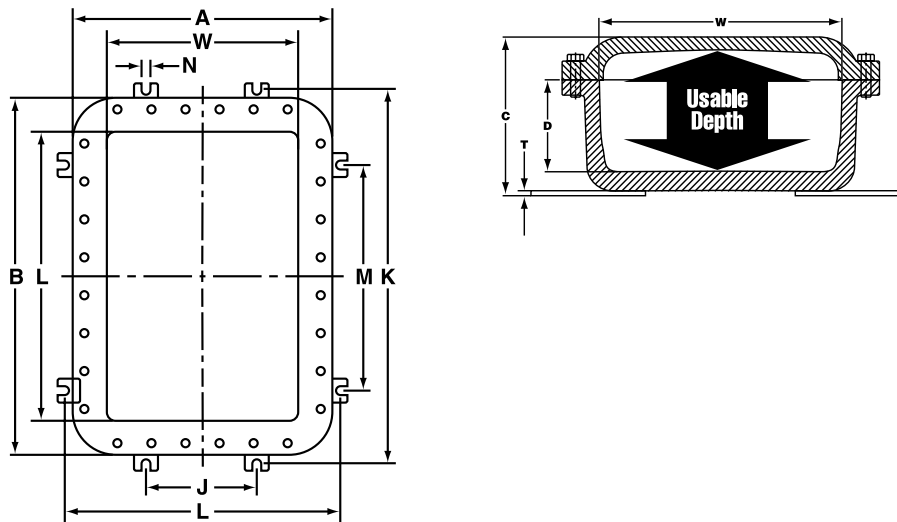
## Bolt-On Mounting Lugs for XCE & XJF Enclosures

### Adjust To Irregular Mounting Surfaces Without Damaging Enclosures



Adalet Bolt-On Mounting Lugs for XCE and XJF Enclosures are bi-directional, permitting either vertical or horizontal mounting orientation. The ductile aluminum alloy lugs adapt to irregular surfaces so lug bolts can be tightened without damaging the enclosure.

5A-4



# Bolt-On Mounting Lugs

Catalog Number	Mounting Dimensions				Mtg. Lug Size N	Mtg. Lug Thickness T
	Optional Mounting J	K	Standard Mounting L	M		
XCE060804M	X	X	7 7/8	4	3/8	1/4
XCE060805M	X	X	7 7/8	4	3/8	1/4
XCE060806M	X	X	7 7/8	4	3/8	1/4
XCE061105M	X	X	7 7/8	9	3/8	1/4
XCE061204M	X	X	7 7/8	10	3/8	1/4
XCE061206M	X	X	7 7/8	10	3/8	1/4
XCE061305M	X	X	7 7/8	11	3/8	1/4
XCE071004M	X	X	8 7/8	8	3/8	1/4
XCE071006M	X	X	8 7/8	8	3/8	1/4
XCE071805M	X	X	8 7/8	16	3/8	1/4
XCE080804M	X	X	9 7/8	6	3/8	1/4
XCE080806M	X	X	9 7/8	6	3/8	1/4
XCE080808M	X	X	9 7/8	6	3/8	1/4
XCE081004M	X	X	9 7/8	8	3/8	1/4
XCE081006M	X	X	9 7/8	8	3/8	1/4
XCE081008M	X	X	9 7/8	8	3/8	1/4
XCE081204M	3 13/16	14 3/8	10 3/8	7 13/16	1/2	3/8
XCE081206M	3 13/16	14 3/8	10 3/8	7 13/16	1/2	3/8
XCE081208M	3 13/16	14 3/8	10 3/8	7 13/16	1/2	3/8
XCE091105M	4 13/16	13 3/8	11 3/8	9	1/2	3/8
XCE101004M	5	13	13	5	1/2	3/8
XCE101006M	5	13	13	5	1/2	3/8
XCE101008M	5	13	13	5	1/2	3/8
XCE101206M	5	15	13	6	1/2	3/8
XCE101404M	5	17	13	9	1/2	3/8
XCE101406M	5	17	13	9	1/2	3/8
XCE101408M	5	17	13	9	1/2	3/8
XCE101410M	5	17	13	9	1/2	3/8
XCE121204M	7	15	15	7	1/2	3/8
XCE121206M	7	15	15	7	1/2	3/8
XCE121208M	7	15	15	7	1/2	3/8
XCE121804M	7	20 7/8	15	12 7/8	1/2	3/8
XCE121806M	7	20 7/8	15	12 7/8	1/2	3/8
XCE121808M	7	20 7/8	15	12 7/8	1/2	3/8
XCE122005M	7	22 7/8	15	14 7/8	1/2	3/8
XCE122404M	7	26 7/8	15	18 7/8	1/2	3/8
XCE122406M	7	26 7/8	15	18 7/8	1/2	3/8
XCE122408M	7	26 7/8	15	18 7/8	1/2	3/8
XCE122410M	7	26 7/8	15	18 7/8	1/2	3/8
XCE123006M	7	33	15	24 7/8	1/2	3/8
XCE123604M	7	39	15	31	1/2	3/8
XCE123606M	7	39	15	31	1/2	3/8
XCE123608M	7	39	15	31	1/2	3/8

Catalog Number	Mounting Dimensions				Mtg. Lug Size N	Mtg. Lug Thickness T
	Optional Mounting J	K	Standard Mounting L	M		
XCE124608M	7	49	15	41	1/2	3/8
XCE141404M	9	17	17	9	1/2	3/8
XCE141406M	9	17	17	9	1/2	3/8
XCE141408M	9	17	17	9	1/2	3/8
XCE142806M	9	31	17	23	1/2	3/8
XCE161604M	11	19	19	10 15/16	1/2	3/8
XCE161606M	11	19	19	10 15/16	1/2	3/8
XCE161608M	11	19	19	10 15/16	1/2	3/8
XCE162406M	11 3/8	27 1/4	19 3/8	19 3/8	1/2	3/8
XCE162408M	11 3/8	27 1/4	19 3/8	19 3/8	1/2	3/8
XCE162410M	11 3/8	27 1/4	19 3/8	19 3/8	1/2	3/8
XCE162806M	11 3/8	31 3/8	19 3/8	23	1/2	3/8
XCE163406M	11 3/8	37 3/8	19 3/8	29 3/8	1/2	3/8
XCE164610M	11 3/8	49 3/8	19 3/8	41 3/8	1/2	3/8
XCE181804M	13 3/8	21 3/8	21 3/8	13 3/8	1/2	3/8
XCE181806M	13 3/8	21 3/8	21 3/8	13 3/8	1/2	3/8
XCE181808M	13 3/8	21 3/8	21 3/8	13 3/8	1/2	3/8
XCE182406M	13	27	21	19	1/2	3/8
XCE182408M	13	27	21	19	1/2	3/8
XCE182410M	13	27	21 1/4	19	1/2	3/8
XCE183008M	13	31	21	25	1/2	3/8
XCE183608M	13 1/4	39 1/2	21	31 1/2	1/2	3/8
XCE183610M	13 1/4	39 1/2	21 1/4	31 1/2	1/2	3/8
XCE203606M	15 3/4	39 3/4	23 3/4	31 3/4	1/2	3/8
XCE204806M	15 3/4	51 3/4	23 3/4	43 3/4	1/2	3/8
XCE242408M	19 1/2	27 1/2	27 1/2	19 1/2	1/2	3/8
XCE242410M	19 1/2	27 1/2	27 1/2	19 1/2	1/2	3/8
XCE243008M	19 9/16	33 9/16	27 9/16	25 9/16	1/2	3/8
XCE243608M	19 9/16	39 9/16	27 9/16	31 9/16	1/2	3/8
XCE243610M	19 9/16	39 9/16	27 9/16	31 9/16	1/2	3/8

5A-5

## XCE Series Recommended Spacing For Operators In Covers

Catalog Number	Standard Operators				Miniature Operators				Cover Wall Thickness (Inches)
	Maximum Number Operators	Maximum Number Operator Rows	Maximum Number Operators Per Row	Recommended Spacing CL to CL	Maximum Number Operators	Maximum Number Operator Rows	Maximum Number Operators Per Row	Recommended Spacing CL to CL	
XCE041604	5	5	1	2 1/2	13	13	1	1	1/2
XCE060804	2	2	1	2 1/2	8	4	2	1	1/2
XCE060805	2	2	1	2 1/2	8	4	2	1	1/2
XCE060806	2	2	1	2 1/2	8	4	2	1	1/2
XCE061105	3	3	1	2 1/2	14	7	2	1	1/2
XCE061204	4	4	1	2 1/2	16	8	2	1	5/8
XCE061206	4	4	1	2 1/2	16	8	2	1	5/8
XCE061305	4	4	1	2 1-2	18	9	2	1	1/2
XCE071004	6	3	2	2 1/2	18	6	3	1	5/8
XCE071006	6	3	2	2 1/2	18	6	3	1	5/8
XCE071805	12	6	2	2 1/2	45	15	3	1	5/8
XCE080804	4	2	2	2 1/2	16	4	4	1	11/16
XCE080806	4	2	2	2 1/2	16	4	4	1	11/16
XCE080808	4	2	2	2 1/2	16	4	4	1	11/16
XCE081004	6	3	2	2 1/2	24	6	4	1	11/16
XCE081006	6	3	2	2 1/2	24	6	4	1	11/16
XCE081008	6	3	2	2 1/2	24	6	4	1	11/16
XCE081204	8	4	2	2 1/2	32	8	4	1	11/16
XCE081206	8	4	2	2 1/2	32	8	4	1	11/16
XCE081208	8	4	2	2 1/2	32	8	4	1	11/16
XCE091105	6	3	2	2 1/2	35	7	5	1	11/16
XCE101004	9	3	3	2 1/2	36	6	6	1	11/16
XCE101006	9	3	3	2 1/2	36	6	6	1	11/16
XCE101008	9	3	3	2 1/2	36	6	6	1	11/16
XCE101206	12	4	3	2 1/2	48	8	6	1	3/4
XCE101404	12	4	3	2 1/2	60	10	6	1	3/4
XCE101406	12	4	3	2 1/2	60	10	6	1	3/4
XCE101408	12	4	3	2 1/2	60	10	6	1	3/4
XCE101410	12	4	3	2 1/2	60	10	6	1	3/4
XCE121204	9	3	3	3	64	8	8	1	7/8
XCE121206	9	3	3	3	64	8	8	1	7/8
XCE121208	9	3	3	3	64	8	8	1	7/8
XCE121804	15	5	3	3	92	14	8	1	15/16
XCE121806	15	5	3	3	92	14	8	1	15/16
XCE121808	15	5	3	3	92	14	8	1	15/16
XCE122005	18	6	3	3	128	16	8	1	1 1/8
XCE122404	21	7	3	3	150	20	8	1	1 1/8
XCE122406	21	7	3	3	150	20	8	1	1 1/8
XCE122408	21	7	3	3	150	20	8	1	1 1/8

Note: Closer spacing other than 2 1/2 & 3 inches available – Consult factory for special designs.

5A-6

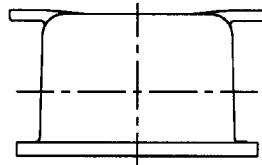
## XCE Series Recommended Spacing For Operators In Covers

Catalog Number	Standard Operators				Miniature Operators				Cover Wall Thickness (Inches)
	Maximum Number Operators	Maximum Number Operator Rows	Maximum Number Operators Per Row	Recommended Spacing CL to CL	Maximum Number Operators	Maximum Number Operator Rows	Maximum Number Operators Per Row	Recommended Spacing CL to CL	
XCE122410	21	7	3	3	150	20	8	1	1 1/8
XCE123006	27	9	3	3	150	26	8	1	1 3/8
XCE123604	33	11	3	3	150	32	8	1	1 3/16
XCE123606	33	11	3	3	150	32	8	1	1 3/16
XCE123608	33	11	3	3	150	32	8	1	1 3/16
XCE124608	42	14	3	3	150	41	8	1	1 1/4
XCE141404	16	4	4	3	100	10	10	1	7/8
XCE141406	16	4	4	3	100	10	10	1	7/8
XCE141408	16	4	4	3	100	10	10	1	7/8
XCE142210	24	6	4	3	100	18	10	1	1 1/8
XCE142213	24	6	4	3	100	18	10	1	1 1/8
XCE142806	32	8	4	3	150	24	10	1	1 1/8
XCE161604	16	4	4	3 1/2	121	11	11	1	7/8
XCE161606	16	4	4	3 1/2	121	11	11	1	7/8
XCE161608	16	4	4	3 1/2	121	11	11	1	7/8
XCE162406	24	6	4	3 1/2	150	19	11	1	7/8
XCE162408	24	6	4	3 1/2	150	19	11	1	7/8
XCE162410	24	6	4	3 1/2	150	19	11	1	7/8
XCE162806	28	7	4	3 1/2	150	24	11	1	1 1/4
XCE163010	32	8	4	3 1/2	150	26	12	1	1 1/4
XCE163406	32	8	4	3 1/2	150	30	11	1	1 1/4
XCE164610	48	12	4	3 1/2	150	41	11	1	1
XCE181804	16	4	4	3 1/2	150	13	13	1	1
XCE181806	16	4	4	3 1/2	150	13	13	1	1
XCE181808	16	4	4	3 1/2	150	13	13	1	1
XCE182406	24	6	4	3 1/2	150	19	13	1	1 1/2
XCE182408	24	6	4	3 1/2	150	19	13	1	1 1/2
XCE182410	24	6	4	3 1/2	150	19	13	1	1 1/2
XCE183008	32	8	4	3 1/2	150	25	13	1	1 1/2
XCE183608	36	9	4	3 1/2	150	31	13	1	1 7/8
XCE183610	36	9	4	3 1/2	150	31	13	1	1 7/8
XCE203606	45	9	5	3 1/2	150	31	15	1	1 7/8
XCE203612	45	9	5	3 1/2	150	31	15	1	1 3/8
XCE204806	65	13	5	3 1/2	150	43	15	1	1 7/8
XCE204812	65	13	5	3 1/2	150	43	15	1	1 3/8
XCE242408	36	6	6	3 1/2	150	19	19	1	1 1/2
XCE242410	36	6	6	3 1/2	150	19	19	1	1 1/2
XCE243008	42	7	6	3 1/2	150	25	19	1	1 7/8
XCE243608	54	9	6	3 1/2	150	31	19	1	1 7/8
XCE243610	54	9	6	3 1/2	150	31	19	1	1 7/8
XCE243612	54	9	6	3 1/2	150	31	19	1	1 3/8
XCE323612	72	9	8	3 1/2	150	31	27	1	1 3/8

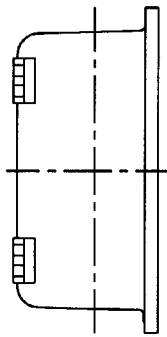
Note: Closer spacing other than 3 & 3 1/2 inches available – Consult factory for special designs.

**XCE & XJF** Explosionproof Enclosures

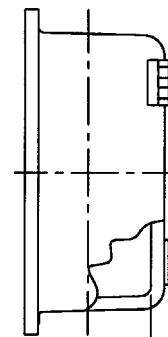
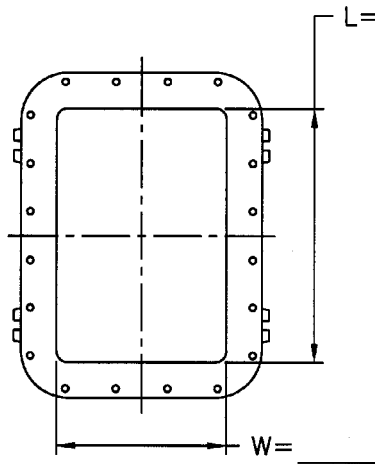
**CUSTOMER DESIGN SHEET**



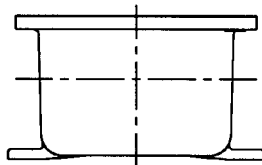
TOP VIEW



LEFT VIEW



RIGHT VIEW

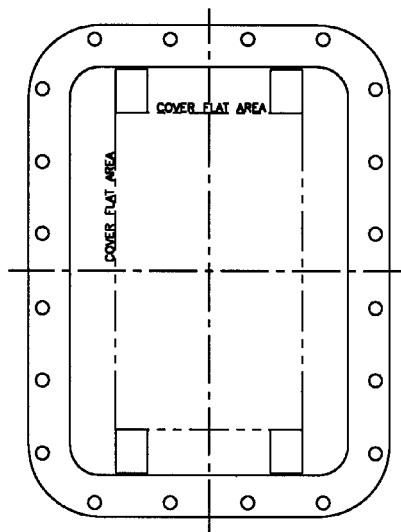


BOTTOM VIEW

**BOX LAYOUT**

CAT. #: X \_\_\_\_\_

- N4 O-RING
- MOUNTING PAN
- HINGES
  - LONG SIDE:
    - LEFT
    - RIGHT
  - SHORT SIDE:
    - TOP
    - BOTTOM
  - NON REMOVABLE
- NO HINGES



**COVER LAYOUT**

\*CONSULT FACTORY FOR FLAT AREA DIMENSIONS

5A-8

# Conduit Drilling and Tapping Guidelines

When drilling & tapping enclosures for conduit, proper installation requires compliance with the following:

1. Must be tapped with at least 5 full NPT threads (XCEX requires six NPT threads) in enclosure back or sides only; min. 1/2" conduit size.
2. Tapping depth of NPT holes must be plus 1/2 turn min. to plus 1-1/2 turns max. past standard NPT plug gage notch.
3. Inner end of conduit openings shall be smooth and well-rounded.

**TABLE I**

Thread Size Of Conduit, Inches (NPT)	Minimum wall thickness at conduit entrance excluding XCEX	
	Explosionproof	Dust Ignition Proof / Weather Proof
1/2 - 3/4	3/8 inch	1/4 inch
1 - 2	7/16 inch	5/16 inch
2 1/2 - 5	5/8 inch	7/16 inch

**TABLE II**

Conduit size, inches (NPT)	1/2	3/4	1	1 1/4	1 1/2	2	2 1/2	3	3 1/2	4	5
Minimum Distance from conduit CL to inside corner or back of box	1 5/16	1 7/16	1 9/16	1 3/4	1 7/8	2 1/8	2 3/8	2 11/16	2 15/16	3 1/4	3 7/8
Approximate diameter of union	1 7/8	1 7/8	2 1/16	2 7/8	3 1/4	3 7/8	4 7/8	5 1/2	6	6 1/2	7 1/2

**TABLE III**

Minimum spacing between conduit centers thru sidewalls only (inches)  
(Double all distances in table for holes located in backwall)

Size	5	4	3 1/2	3	2 1/2	2	1 1/2	1 1/4	1	3/4	1/2
1/2	4 1/2	3 5/8	3 3/8	3	2 5/8	2 3/8	2	1 7/8	1 3/4	1 5/8	1 1/2
3/4	4 3/4	3 3/4	3 1/2	3 1/8	2 3/4	2 1/2	2 1/8	2	1 7/8	1 3/4	
1	4 7/8	4	3 5/8	3 1/4	3	2 5/8	2 3/8	2 1/4	2		
1 1/4	5 1/8	4 1/8	3 7/8	3 1/2	3 1/8	2 7/8	2 1/2	2 3/8			
1 1/2	5 1/2	4 1/4	4	3 5/8	3 1/4	3	2 5/8				
2	5 3/4	4 5/8	4 1/4	3 7/8	3 5/8	3 1/4					
2 1/2	6	4 7/8	4 5/8	4 1/4	3 7/8						
3	6 1/4	5 3/8	5	4 5/8							
3 1/2	6 1/2	5 5/8	5 1/4								
4	6 3/4	5 7/8									
5	7 1/4										

This information is compiled from data which we believe is reliable and is given in good faith. Since the methods of application and conditions under which our products are used are beyond our control, we are not able to guarantee the application and/or use of same. The user assumes all risks and liability in connection with the application and use of our products.

**Note:** All dimensions are in inches.  
Metric threads available from factory for Group C & D applications only – Consult Factory.

The Adalet engineering department is available to assist in designing custom explosionproof enclosures for your products.

5A-9

# Conduit & Auxiliary Device Drilling and Tapping Guidelines

## SPACING FOR AUXILIARY DEVICES INSTALLED IN BOX WALLS OF CONTROL PANEL ENCLOSURES USED IN HAZARDOUS LOCATIONS.

When using an Auxiliary Device in the box wall of an enclosure used in hazardous locations, proper installation requires compliance with the following:

1. A minimum of (5) thread engagement, class 2 fit, required for group C & D applications.  
A minimum of (7) thread engagement, class 2 fit, required for group B applications.
2. Table I shows minimum box wall thickness for Auxiliary Device threads.

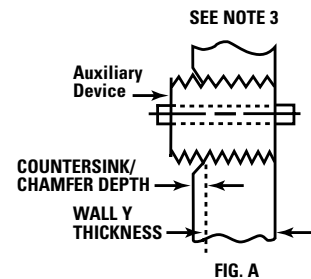
**TABLE I**

Thread Size (In.)	REQUIRED MINIMUM BOX WALL THICKNESS		Typical Auxiliary Devices
	Group C & D Applications min. (5) thread engagement	Group B Applications min. (7) thread engagement	
1/2 – 3/4 NPSM (14 PITCH)	3/8 Inch	1/2 Inch	XBO, XHPB, XHSS, Standard Operators
1 NPSM (11 1/2 PITCH)	7/16 Inch	5/8 Inch	XCBH Large Handle Assembly
3/8 NPSM (18 PITCH)	9/32 Inch	13/32 Inch	XCBH Small Handle Assembly
3/8 – 16 UNC	5/16 Inch	7/16 Inch	XMOB, XMOSS, Mini Operators

3. If Auxiliary Device contains undercut in engaging threaded section, the minimum wall thickness shown in Table I must increase to maintain the minimum required thread engagement. (Fig. A)
4. Table II provides the minimum distance an Auxiliary Device center can be placed from inside corner or back of box.

**TABLE II**

AUXILIARY DEVICE THREAD SIZE (In.)	3/8-16 UNC	3/8 NPSM	1/2 NPSM	3/4 NPSM	1 NPSM
Minimum distance from Auxiliary Device CL to inside corner of back of box.	1-1/2	1-5/8	1-3/4	1-7/8	2



5. Table III shows minimum spacing between conduit and Auxiliary Device entrances.

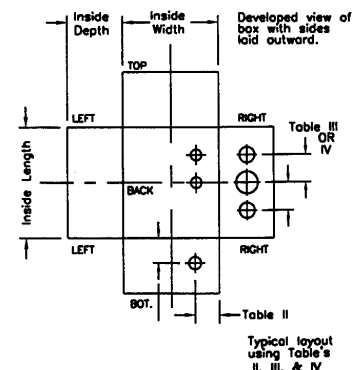
**TABLE III**

Aux. Device Thread Size	Minimum space between centers of conduits and auxiliary devices in box wall. (Inches)										
	Conduit Thread Size (NPT)										
	5	4	3-1/2	3	2-1/2	2	1-1/2	1-1/4	1	3/4	1/2
3/8	4-1/2	3-5/8	3-3/8	3	2-5/8	2-3/8	2	1-7/8	1-3/4	1-5/8	1-1/2
1/2	4-5/8	3-3/4	3-1/2	3-1/8	2-3/4	2-1/2	2-1/4	2-1/8	2	1-7/8	1-3/4
3/4	4-3/4	4	3-5/8	3-1/4	2-7/8	2-5/8	2-3/8	2-1/4	2-1/8	2	1-7/8
1	5	4-1/4	3-7/8	3-1/2	3	2-3/4	2-1/2	2-3/8	2-1/4	2-1/8	2

6. Table IV shows minimum spacing between auxiliary device entrances.  
NOTE: Increase distance between devices as required to maintain minimum through air spacing of contacts required by electrical codes.
7. Double all distances in Table III and IV for holes located in back wall.

**TABLE IV**

Minimum spacing between Auxiliary Device of varying thread sizes (Inches)				
	3/8	1/2	3/4	1
3/8	1-1/2	1-1/2	1-1/2	2-1/2
1/2	1-1/2	2	2	2-1/2
3/4	1-1/2	2	2	3
1	2-1/2	2-1/2	3	3-1/2



Consult factory for layout data sheets.

5A-10

## XCE and XJF Mounting Pans and Hinges

### MOUNTING PANS

Catalog Number (Steel)	Catalog Number (Aluminum)	Catalog Number (Phenolic)	Pan Dimensions Nominal		Enclosure Size Reference Inside width x length	Weight Each (pounds) (Steel)
			Width	Length		
XSM 0416	XSA 0416	XSB 0416	3 1/4	15 1/4	4 x 16	1 1/2
XSM 0608	XSA 0608	XSB 0608	5 1/8	7 1/8	6 x 8	1
XSM 0611	XSA 0611	XSB 0611	5 1/8	10 1/8	6 x 11	1 1/2
XSM 0612	XSA 0612	XSB 0612	5 1/8	11 1/8	6 x 12	1 3/4
XSM 0613	XSA 0613	XSB 0613	5 1/8	12 1/8	6 x 13	2
XSM 0710	XSA 0710	XSB 0710	6 1/8	9 1/8	7 x 10	1 1/4
XSM 0718	XSA 0718	XSB 0718	6 1/8	17 3/8	7 x 18	2 1/2
XSM 0808	XSA 0808	XSB 0808	7	7	8 x 8	1 1/4
XSM 0810	XSA 0810	XSB 0810	7	9 1/8	8 x 10	1 1/2
XSM 0812	XSA 0812	XSB 0812	6 7/8	10 7/8	8 x 12	2 1/4
XSM 0911	XSA 0911	XSB 0911	8	10	9 x 11	2 1/2
XSM 1010	XSA 1010	XSB 1010	8 7/8	8 7/8	10 x 10	2 1/2
XSM 1012	XSA 1012	XSB 1012	10 7/8	8 7/8	10 x 12	3
XSM 1014	XSA 1014	XSB 1014	8 7/8	12 7/8	10 x 14	3 1/2
XSM 1212	XSA 1212	XSB 1212	10 7/8	10 7/8	12 x 12	3 3/4
XSM 1218	XSA 1218	XSB 1218	10 1/2	16 1/2	12 x 18	5 1/2
XSM 1220	XSA 1220	XSB 1220	11	19	12 x 20	6 1/2
XSM 1224	XSA 1224	XSB 1224	11	23	12 x 24	8
XSM 1230	XSA 1230	XSB 1230	10 3/4	28 3/4	12 x 30	9 3/4
XSM 1236	XSA 1236	XSB 1236	10 3/4	34 3/4	12 x 36	11 3/4
XSM 1246	XSA 1246	XSB 1246	10 3/4	44 3/4	12 x 46	15
XSM 1414	XSA 1414	XSB 1414	12 7/8	12 7/8	14 x 14	5
XSM 1422	XSA 1422	XSB 1422	12 7/8	20 7/8	14 x 22	8
XSM 1428	XSA 1428	XSB 1428	12 7/8	26 7/8	14 x 28	10 3/4
XSM 1616	XSA 1616	XSB 1616	14 3/4	14 3/4	16 x 16	6 3/4
XSM 1624	XSA 1624	XSB 1624	14 1/2	22 1/2	16 x 24	10 1/4
XSM 1628	XSA 1628	XSB 1628	26 1/2	14 1/2	16 x 28	12
XSM 1630	XSA 1630	XSB 1630	14 1/2	28 1/2	16 x 30	12 1/2
XSM 1634	XSA 1634	XSB 1634	32 1/2	14 1/2	16 x 34	14 3/4
XSM 1646	XSA 1646	XSB 1646	14 1/2	44 1/2	16 x 46	20 1/4
XSM 1818	XSA 1818	XSB 1818	16 3/4	16 3/4	18 x 18	8 3/4
XSM 1824	XSA 1824	XSB 1824	16 1/2	22 1/2	18 x 24	11 1/2
XSM 1830	XSA 1830	XSB 1830	16 1/2	28 1/2	18 x 30	14 3/4
XSM 1836	XSA 1836	XSB 1836	16 1/2	34 1/2	18 x 36	18
XSM 2036	XSA 2036	XSB 2036	34 1/2	18 1/2	20 x 36	20
XSM 2048	XSA 2048	XSB 2048	46 1/2	18 1/2	20 x 48	27
XSM 2424	XSA 2424	XSB 2424	22	22	24 x 24	15 1/4
XSM 2430	XSA 2430	XSB 2430	22	28	24 x 30	19 1/4
XSM 2436	XSA 2436	XSB 2436	34	22	24 x 36	23 1/2
XSM 3236	XSA 3236	XSB 3236	29	33	32 x 36	28 3/4

### Mounting Pans

#### MATERIAL — Steel: (XSM)

Galvanized 12 gauge steel plate. The catalog number includes the steel mounting pan complete with 1/4" high spacers and stainless steel mounting screws.

**MATERIAL — Aluminum: (XSA)** Consult factory for availability.

#### MATERIAL — Phenolic: (XSB)

A special phenolic laminated material that has high mechanical and dielectric strength. It is excellent for mounting and wiring control equipment. The catalog number includes the phenolic board, 3/8" thick, complete with 1/4" high spacers and stainless steel mounting screws.

**Note:** No installation charge when customer specifies factory installation of mounting pan.

### HINGES

Hinges Catalog Number	Enclosure Size Reference Inside width x length
XHB-2	4 x 16
XHB-2	6 x 8
XHB-2	6 x 11
XHB-2	6 x 12
XHB-2	6 x 13
XHB-2	7 x 10
XHB-2	7 x 18
XHB-2	8 x 8
XHB-2	8 x 10
XHB-2	8 x 12
XHB-2	9 x 11
XHB-2	10 x 10
XHB-2	10 x 12
XHB-2	10 x 14
XHB-2	10 x 18
XHC-2	12 x 12
XHC-2	12 x 18
XHC-2	12 x 20
XHC-2	12 x 24
XHC-2	12 x 30
XHD-3	12 x 36
XHD-4	12 x 46
XHC-2	14 x 14
XHF-2	14 x 22
XHF-2	14 x 28
XHD-2	16 x 16
XHF-2	16 x 24
XHF-2	16 x 28
XHF-2	16 x 30
XHD-3	16 x 34
XHF-4	16 x 46
XHF-2	18 x 18
XHF-2	18 x 24
XHF-2	18 x 30
XHF-3	18 x 36
XHF-3	20 x 36
XHF-4	20 x 48
XHF-2	24 x 24
XHF-2	24 x 30
XHF-3	24 x 36
XHF-3	32 x 36

### Hinge Set

#### Description:

Made of extruded aluminum alloy consisting of two sections, female and male (with stainless steel pin) and four stainless steel hex head bolts. Designed to allow right or left hand removable or non-removable installation.

Unless specified, left hand removable hinge installation will be furnished by factory when hinged enclosures are ordered.

**Note:** Catalog numbers represent complete hinge sets necessary for enclosure assembly.

**XCE** Glass Windows

**DIVISION I AND DIVISION II  
CLASS I GROUPS B, C, & D; CLASS II GROUPS E, F, & G  
NEMA 7, 9, NEMA 4/IP66 (OPTIONAL)**



Circular Window	Window Viewing Area Diameter	Overall Window Cover Diameter	Minimum Enclosure Inside Width / Length
XGC 10	1 1/8	3	8
XGC 20	1 15/16	4 1/8	9
XGC 30	3	5 3/16	9
XGC 40	4	6 3/8	9
XGC 52	5 1/4	7 7/8	12
XGC 66	6 11/16	10 3/8	16
XGC 80	8	12 1/8	18

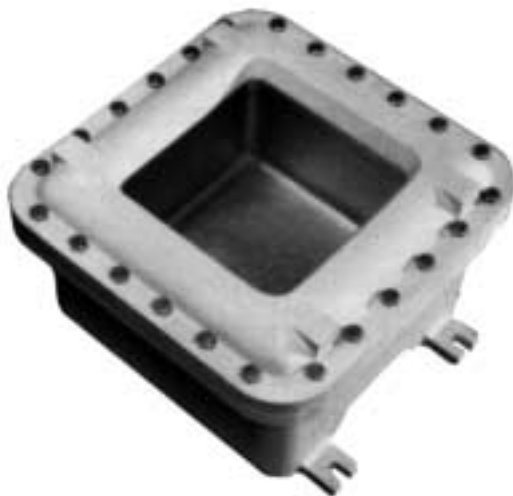
All dimensions are in inches.

Glass window catalog number includes XCE cover machining and installation.

For raintight, watertight NEMA 4/IP66 option add suffix "N4".

To order glass windows for field installations, add suffix SLF to XGC catalog no.

Consult factory for closer spacing requirements, multiple windows or combinations of operators and windows.



Rectangular Window	Window Viewing Area Size	Minimum Enclosure Inside Width	Minimum Enclosure Inside Length
XGW 0303	3 X 3	8	8
XGW 0305	3 X 5	8	10
XGW 0307	3 X 7	8	12
XGW 0505	5 X 5	10	10
XGW 0509	5 X 9	10	14
XGW 0707	7 X 7	12	12
XGW 0713	7 X 13	12	18
XGW 0909	9 X 9	14	14
XGW 1111	11 X 11	16	16
XGW 1313	13 X 13	18	18

All dimensions are in inches.

Glass window catalog number includes installation.

For raintight, watertight NEMA 4 option add suffix "N4".

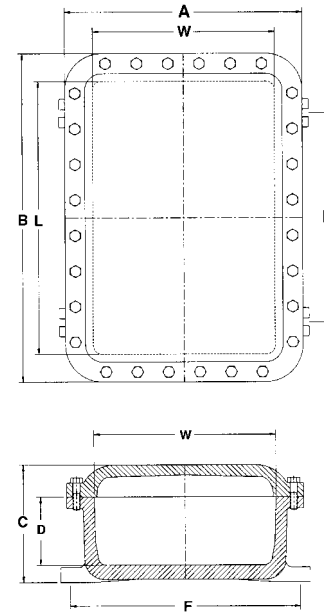
Consult factory for special viewing area requirement, closer spacing and to combine windows with other window sizes or operators.

5A-12

## DJF and WJF External Flanged Junction Boxes

### DJF DUST-TIGHT EXTERNAL FLANGED JUNCTION BOXES CLASS II GROUPS E, F, & G; NEMA 9

### WJF WATERTIGHT EXTERNAL FLANGED JUNCTION BOXES NEMA 4

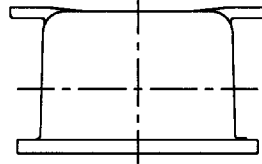


DJF/WJF Catalog Number	Inside Nominal Dimensions			Overall Dimensions			Mounting Lug CL to CL		Mounting Bolt Size	Side Wall Thickness	Shipping Weight, Pounds
	W	L	D	A	B	C	E	F			
061105	6	11	5	8 3/8	13 1/8	6 13/16	7 1/2	8 5/8	3/8	3/8	16
061305	6	13	5	8 1/8	15 1/8	6 13/16	9 1/2	8 5/8	3/8	3/8	18
071805	7	18	5	9 1/8	20 1/8	6 13/16	14 1/2	9 1/8	3/8	3/8	30
121806	12	18	6	14 1/2	20 1/2	7 15/16	14 3/8	14 3/4	1/2	7/16	42
122005	12	20	5	14 1/4	22 1/4	6 15/16	14 3/8	14 3/4	1/2	7/16	47
122406	12	24	6	14 1/4	26 1/4	7 15/16	18 3/4	14 3/4	1/2	7/16	52
122408	12	24	8	14 1/4	26 1/4	9 15/16	18 3/4	14 3/4	1/2	7/16	62
123006	12	30	6	14 3/8	32 3/8	8 1/16	22 3/4	15	5/8	1/2	67
123208	12	32	8	15	35	10 3/16	27 1/2	14 1/8	1/2	5/8	80
123608	12	36	8	14 3/8	38 3/8	10 3/16	29	14 3/4	1/2	5/8	110

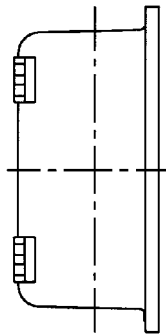
5A-13

# DJF and WJF External Flanged Junction Boxes

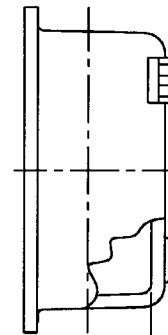
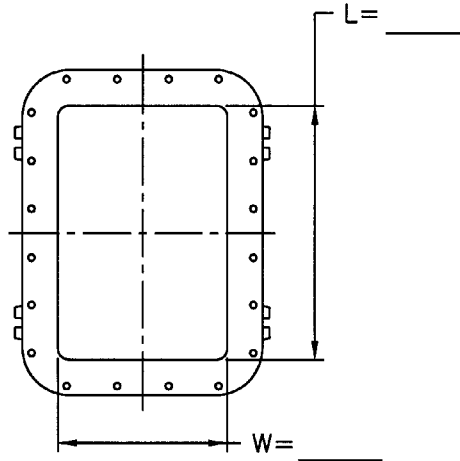
## CUSTOMER DESIGN SHEET



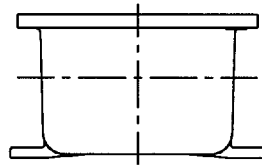
TOP VIEW



LEFT VIEW



RIGHT VIEW

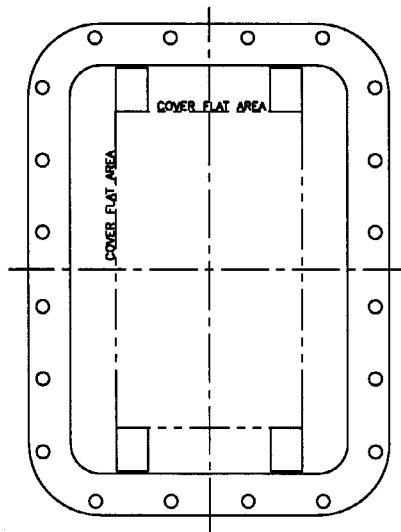


BOTTOM VIEW

### BOX LAYOUT

CAT. # DJF \_\_\_\_\_  
 # WJF \_\_\_\_\_

- N4 O-RING
- MOUNTING PAN
- HINGES
  - LONG SIDE:
    - LEFT
    - RIGHT
  - SHORT SIDE:
    - TOP
    - BOTTOM
  - NON REMOVABLE
- NO HINGES



### COVER LAYOUT

\*CONSULT FACTORY FOR FLAT AREA DIMENSIONS

5A-14